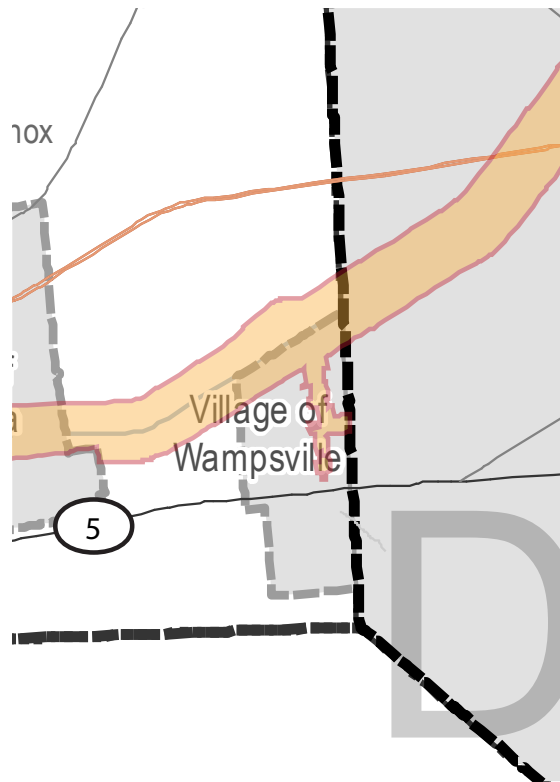


VILLAGE OF WAMPSVILLE



LOCATION AND CONTEXT

The Village of Wampsville is on the east side of the Town of Lenox and is situated between the Village of Canastota and the City of Oneida. With just under 550 residents and a land area of 1 square mile, Wampsville is the smallest community in the WRA in terms of population and physical size. Wampsville is the Madison County Seat, and a government complex with multiple buildings is located centrally within it. During the workday the Village experiences an influx of over 500 County employees and residents seeking County services.

The OEC SHP and the Erie Canalway Trail crosses the northern edge of the Village, running east-west for approximately .75 mile. The Village is an important connection point between the Erie Canalway Trail, the Lenox Rail Trail, and the Oneida Rail Trail.

A CSX Rail Line and Route 5/Genesee Street, which is a moderately to heavily trafficked road, also run east-west through the Village.

HISTORY

Wampsville was settled in the early nineteenth century as Erie Canal construction spurred regional settlement and development. The Village gained its name in 1825 in recognition of an early settler and the first tavern keeper, Myndert Wemple (Helmer, 2005g).

Wampsville, bound by Cowaselon Creek to the east, became a small business hub along the Great Trail (later, the State Road or Seneca Turnpike) and Erie Canal. Its central and convenient location between larger settlements and along these transportation routes increased the demand for land in Wampsville; by 1910, Wampsville became the county seat. Despite the regional success of the canal system, Wampsville remained a small, predominantly agricultural village throughout the twentieth century (Hammond, 1872; Helmer, 2005g).

LAND USE AND ZONING

The Old Erie Canal serves as the northern border of the Village of Wampsville. The LWRP boundary captures the development along North Court Street

VILLAGE OF WAMPSVILLE LAND USE AND DEVELOPMENT CONTROLS

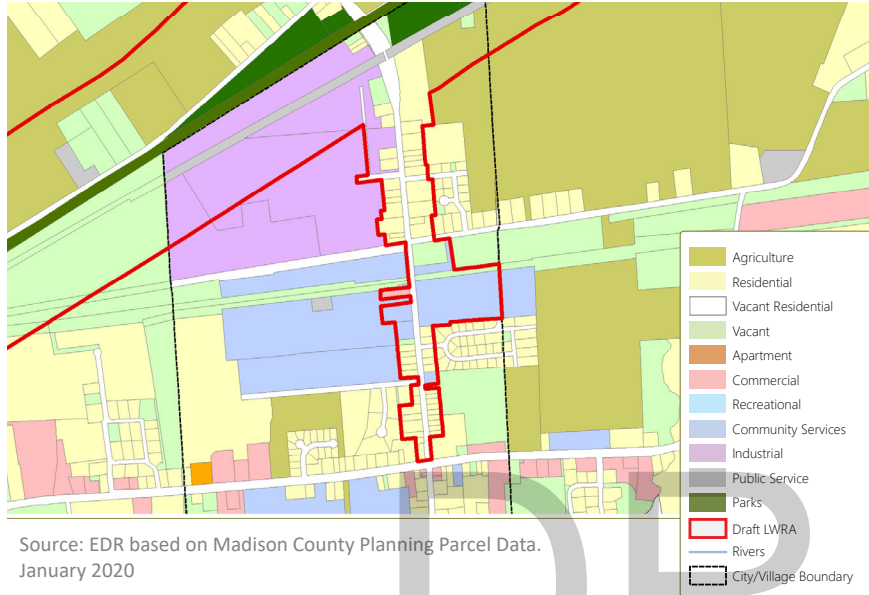
ZONING WITHIN THE WRA	
OVERLAY DISTRICTS	NO
SUBDIVISION REVIEW	YES
SITE PLAN REVIEW	YES
DESIGN STANDARDS	NO
PLANNED DEVELOPMENT ALLOWED?	NO
COMPREHENSIVE PLAN	NO
SUGGESTIONS	

from Canal Road southward to Genesee Street (State Route 5). There is a section of industrial warehouse and manufacturing along the CSX rail line to Donald Hicks Dew Drive. A Rail Trail connecting Canastota to Wampsville was recently completed. This trail links to the Oneida Rail Trail, which then extends eastward into downtown Oneida. The Madison County Office Complex is also contained within the LWRP boundary and contains many governmental offices including Social Services, the Court system, Career Center, DMV, Mental Health, Sheriff's Office, Highway, and many more. The remaining property in the LWRP is primarily residential, with one small restaurant being the exception.

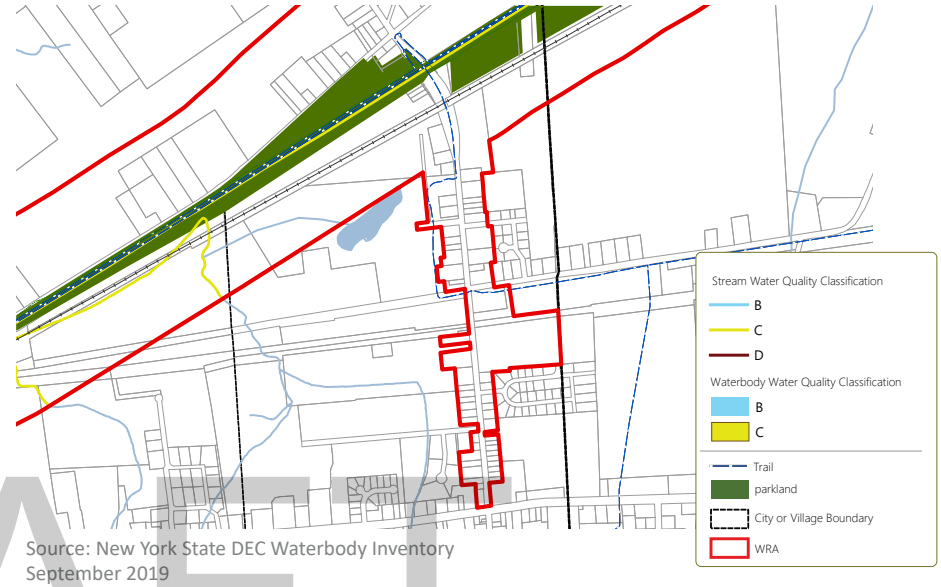
WATER QUALITY AND LAND COVER

The Old Erie Canal in the Village of Wampsville

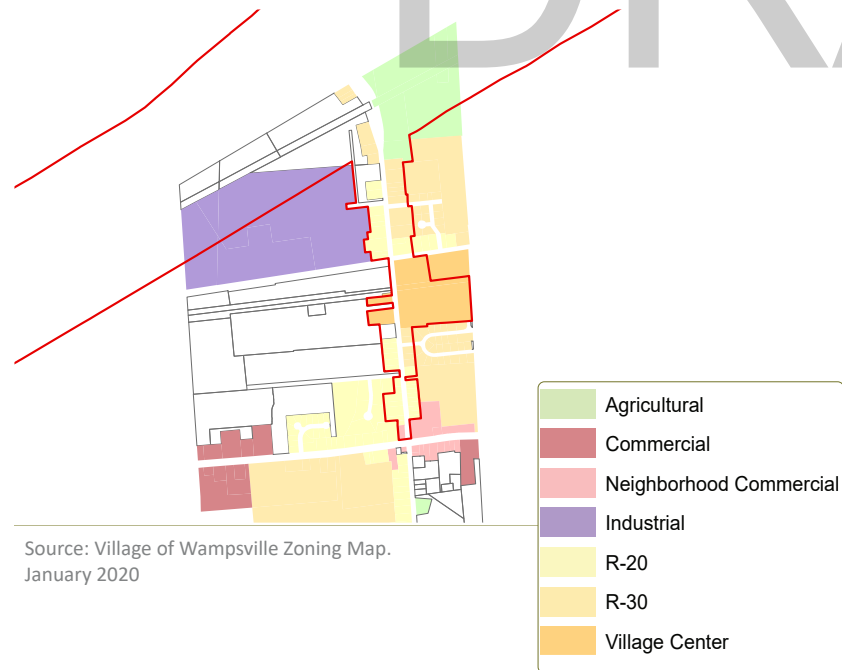
LAND USE



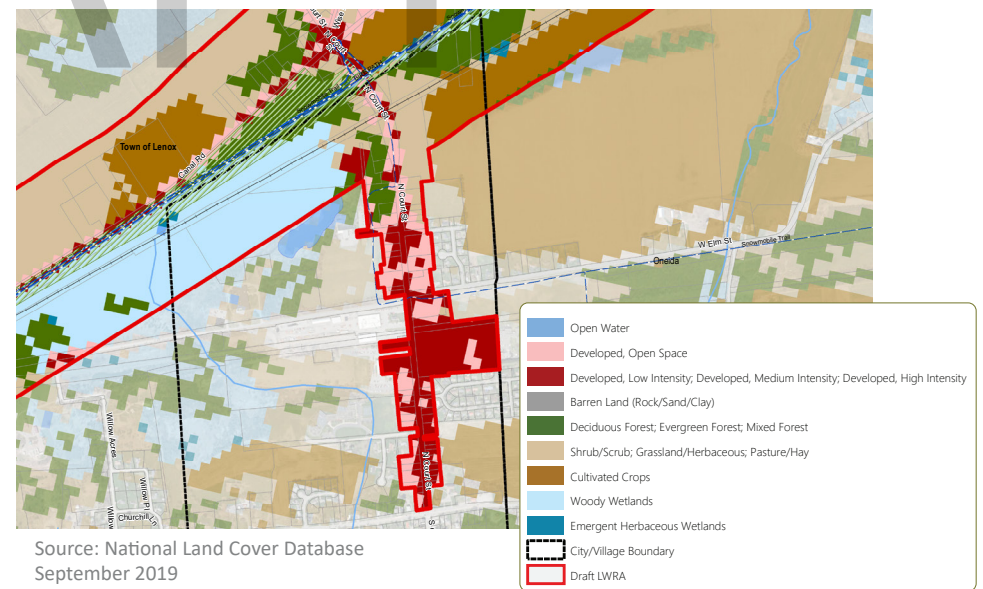
WATER QUALITY



ZONING



LAND COVER



continues to be classified as C, meaning that the designated best use is for fish and wildlife; however, the Canal passes through a culvert under North Court Street which adversely impacts habitat conditions. Water quality conditions are to be suitable for water-based recreational use as well, although physical factors such as depth and accessibility may be limiting. Water level and velocity are low in this segment during the summer recreational period. In addition, prolific algal blooms limit the aesthetic appeal of the canal when the water is essentially stagnant. The risk that some of the observed blooms may be cyanobacteria has not been assessed. Cyanobacterial blooms, also known as Harmful Algal Blooms, have the potential to be toxic to humans and domestic animals. These conditions are evident in various segments of the Canal but become most pronounced from this point near Oneida to the terminus of the Old Erie Canal in Rome given the increasing distance from feeder canals and extent of rooted aquatic vegetation.

HISTORIC AND CULTURAL RESOURCES

Two historic resources in the Village of Wampsville include the Madison County Courthouse, in the County Government Complex, and a former Presbyterian Church on Route 5/Genesee Street. Of these, the Courthouse may be of some interest to tourists interested in architecture or local government history.

NATIONAL REGISTER OF HISTORIC PLACES LISTED AND ELIGIBLE SITES

①	138 N. Court St (Eligible)	Madison County Courthouse
②	109 Genesee Street	Presbyterian Church

PUBLIC ACCESS AND RECREATION

The Erie Canalway Trail runs directly adjacent to the Old Erie Canal as it travels across the northern boundary of the Village of Wampsville for .75 mile. This section feels rural and remote. Occasionally traffic on Canal Road, which sits behind a vegetated buffer to the north of the trail, is audible. Similarly, a CSX rail line located about 300 feet south of the trail, occasionally introduces sound from freight traffic. Otherwise the trail is quiet and feels natural.

A single public access point is available at North Court Street, where a gravel parking lot is located west of a small side street called the North Court Street Spur. This location can be difficult to find because the Spur Road is a short and remote dead-end. Immediately north of this location, the trail jogs to a striped crossing at the intersection

of North Court Street and Canal Road. The jog causes wayfinding difficulty for some trail users. A 2019 signage installation that included directional and community wayfinding has helped to address this issue. The signage also points trail users toward some amenities including restaurants and a playground along the Court Street spine in the Village of Wampsville and helps to highlight trail connections to the Lenox Rail Trail and Oneida Rail Trail.

Paddlers are typically able to contiguously paddle along the Old Erie Canal within this section, however, there are several downed trees within the Wampsville area of the Canal which almost completely inhibit paddling.

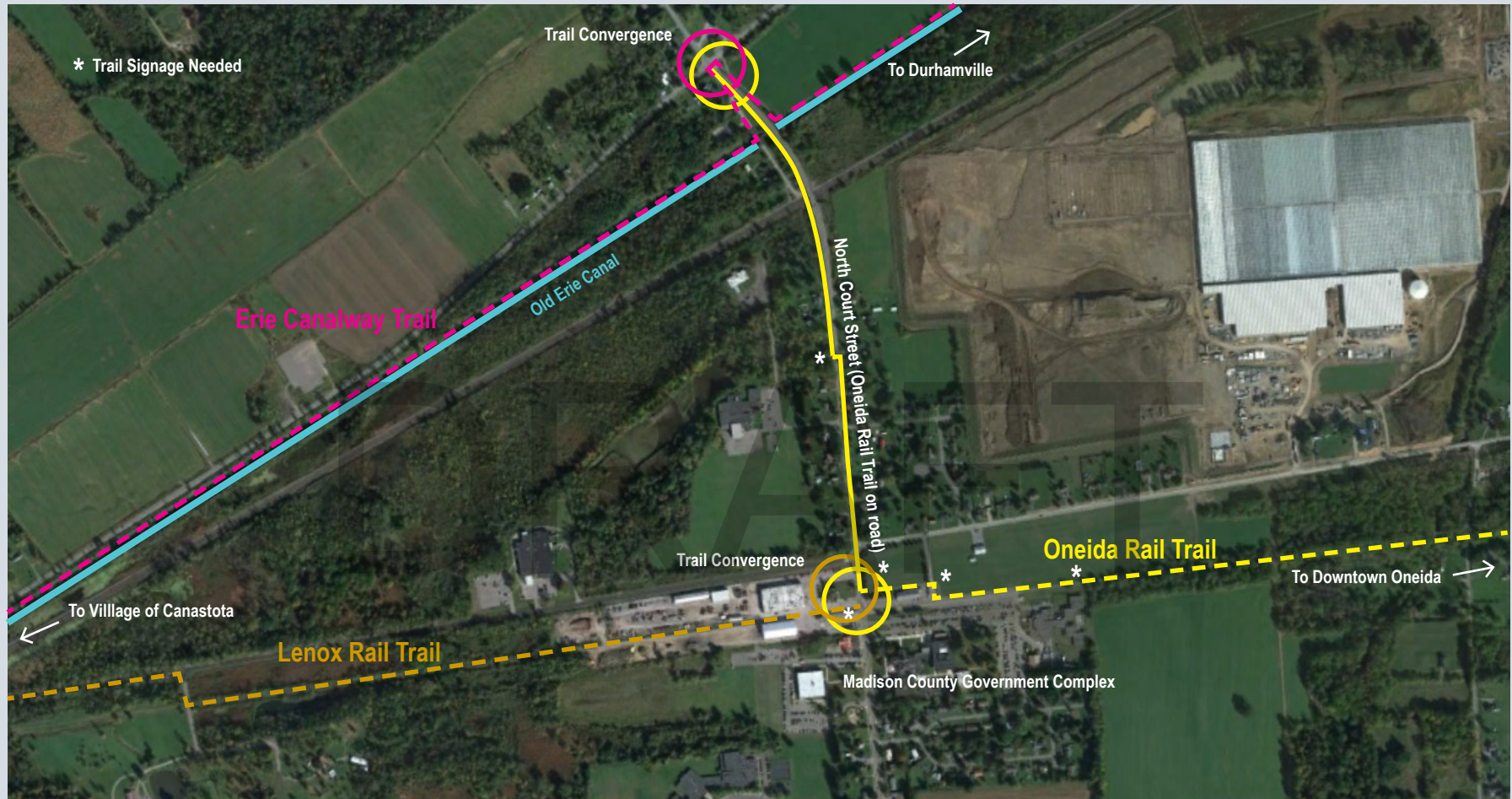
This section of the WRA is primarily visited by locals as well as cyclists engaged in long distance through-travel. Walking and cycling are the primary trail activities. Fishing is also done here.

TRANSPORTATION + UTILITY CROSSINGS

The trail in Wampsville is briefly re-routed to accommodate the ramp to the North Court Street Bridge, which crosses over a CSX rail line. This bridge does not interrupt the waterway. A large culvert allows the Old Erie Canal to pass under the bridge with enough room for non-motorized boats.

STRUCTURE NAME	TYPE	OWNER	MAINTENANCE RESPONSIBILITY
Court Street	Bridge	Madison County	Madison County
N. Court Street/Spur Road	Bridge	DOT	DOT

SPOTLIGHT: Three Trails Converge in Wampsville



Wampsville is the only community in the Old Erie Canal State Historic Park system where three trail systems converge within a half mile of each other. Two of these trails, the Oneida Rail Trail and the Lenox Rail Trail, were installed in 2019 and 2020, and represent new opportunities for residents and visitors to connect to communities and form

recreational loops using the different trails. Signage explaining the opportunities to navigate between the three systems would help trail users understand the possibilities for traveling between trails and using the trails to access destinations including the Village of Canastota, Downtown Oneida, and the Madison County Government Complex. Signage should be

located at key trail convergence points. In addition to marking the trails and connection points, Wampsville should take pride in being the point of confluence between these three systems. Recognizing and advertising this important asset could help to bolster local businesses and define Wampsville as a destination of interest.

Existing parking area for the Erie Canalway Trail located adjacent to North Court Street Spur



Wampsville Community Wayfinding Sign at North Court Street



Water conditions of the Erie Canal in Wampsville



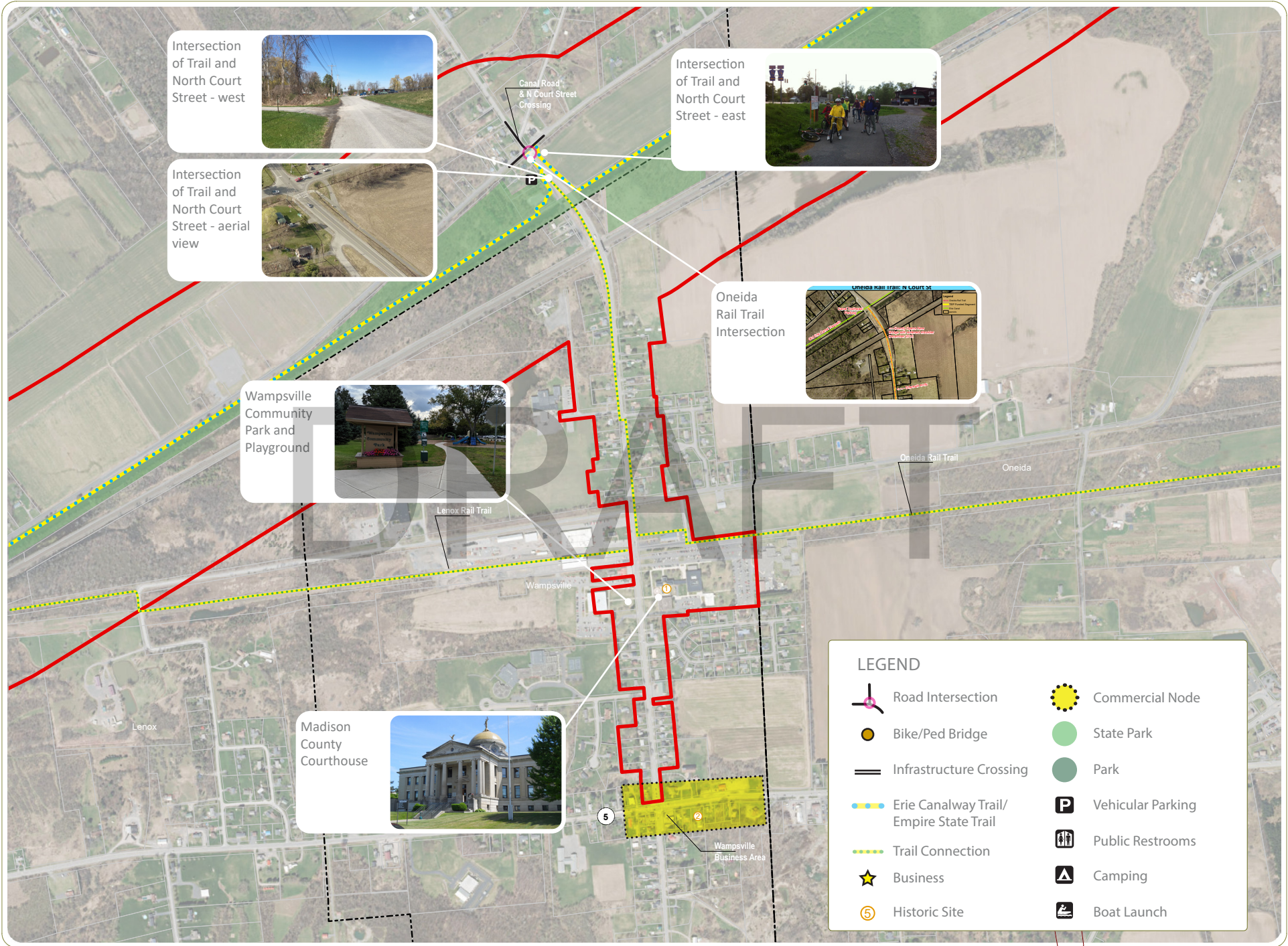
VILLAGE OF WAMPSVILLE ISSUES AND OPPORTUNITIES

The map to the right provides an overview of the context of the WRA in the Village of Wampsville.

- + Wampsville contains the Erie Canalway Trail, the Lenox Rail Trail, and the Oneida Rail Trail, representing an important point of connection between these trail systems. Building awareness of this fact is important to the Village of Wampsville. Increased destination-based and through trail traffic would support and potentially help to grow the restaurants and other small businesses within the Village.
- + The water in this section of the Old Erie Canal suffers from debris, particularly downed trees, which are more prevalent here than in sections to the east and west. Clearing these is important for navigability by kayakers and canoers. All of the bridges between Canastota and Oneida are passable by non-motorized boat, but trees are a major obstacle in this and adjacent sections.
- + A non-motorized boat launch could be incorporated into the North Court Street Spur Parking Area. This, in conjunction with launches in Canastota and Oneida, would help to establish a blueway trail on the Old Erie Canal East of Canastota.
- + Opportunities to improve the North Court Street Spur Parking Area include potential resurfacing, seating, wayfinding, plantings, and interpretive signage.
- + Supplemental wayfinding signs could be useful in motivating trail users to explore the Village by traveling over the North Court Street Bridge. Although the journey over the bridge is on an incline

and may be considered unpleasant, it connects trail users to historic buildings, restaurants, parks, and a network of connecting trails.

- + The Madison County Office Complex could welcome cyclists by advertising the availability of amenities such as restrooms and water fountains during daytime hours. The complex could also install bike racks and fix-it stations near the confluence of the three trails.
- + The Erie Canalway Trail goes on-road for approximately 1,000 feet along North Court Street/Spur Road and up to the North Court Street/Canal Street intersection (in order to bypass North Court Street highway bridge which goes over the canal in this location). This on-road portion could be enhanced and better delineated.



Intersection of Trail and North Court Street - west



Intersection of Trail and North Court Street - aerial view



Intersection of Trail and North Court Street - east

















Wampsville Community Park and Playground



Madison County Courthouse



LEGEND

-  Road Intersection
-  Bike/Ped Bridge
-  Infrastructure Crossing
-  Erie Canalway Trail/
Empire State Trail
-  Trail Connection
-  Business
-  Historic Site
-  Commercial Node
-  State Park
-  Park
-  Vehicular Parking
-  Public Restrooms
-  Camping
-  Boat Launch

0 0.04 0.08 0.16 0.24 0.32 Miles